

Toolbox holder kit for the GIVI S250 toolbox Installation manual

Needed tools

- Zip tie or some small diameter tape
- 10mm socket wrench
- 13mm socket wrench
- 4mm Allen key
- 5mm Allen key
- 5.8 or 6.0mm drill bit (+ drill)

Important notice of use



The holder is made out of Aluminum and is perceptible to corrosion due to the environment, for example salt (just like the outback trekker cases). Be aware of this and try to keep it clean from corrosive substances.

Optional: Soft luggage mounting

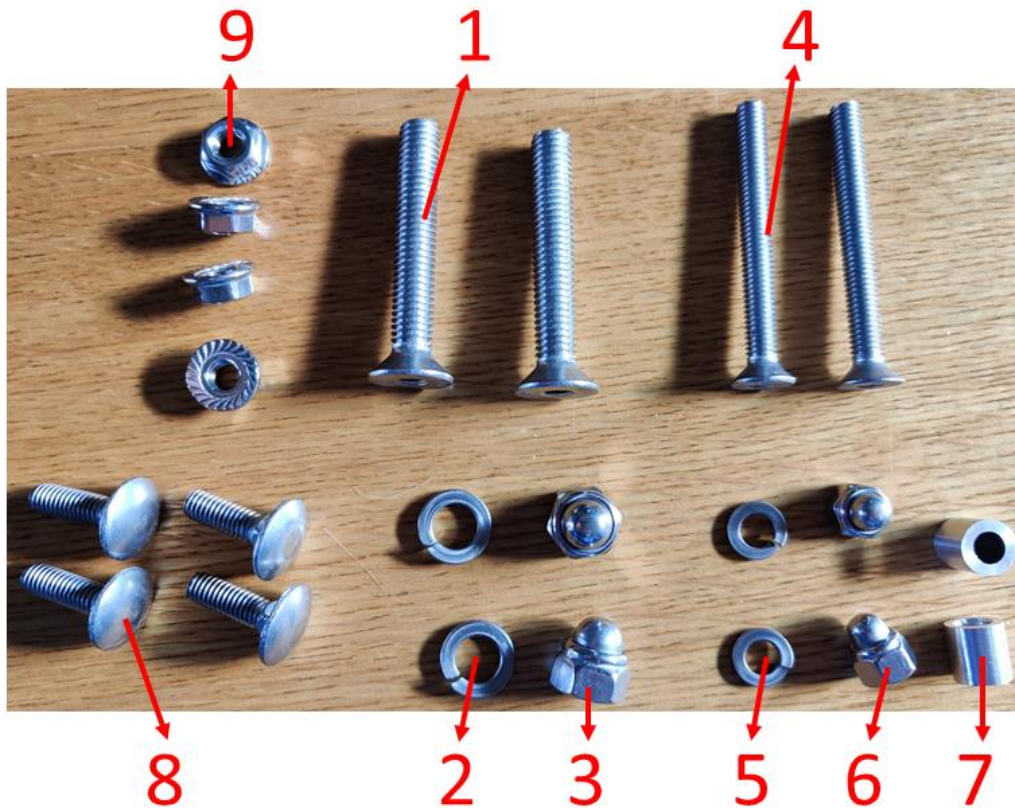
Soft luggage option is available at checkout.

If using this mounting option. Go to the instructions for [soft luggage mounting](#) on page 8.



Included in the kit

Quantity	Item number	Item
2	1	M6 bolts
2	2	M6 washers
2	3	M6 Stopping nuts
2	4	M8 bolts
2	5	M8 washers
2	6	M8 Stopping nuts
2	7	M6x10 adapters (optional)
4	8	M6 Carriage bolt for the toolbox
4	9	Flange nuts with teeth
1	-	Toolbox mounting plate



Mounting with the Aluminum cases

1. Replace the standard bolts

Upper bolts have to be changed with *item number 1*



Use some zip ties or tape to hold the upper mounting parts in place. There are springs located that may come loose if not paying attention!

Lower bolts have to be changed by *item number 4*.



2. Drill holes in the toolbox.

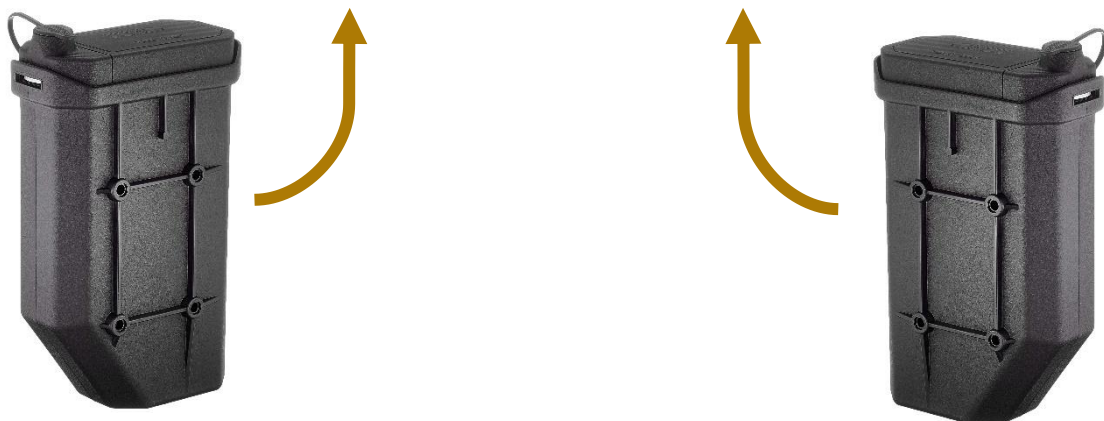
Fit the mounting plate over the installed bolts. Check the orientation that is preferred for your mounting plate and toolbox.

Depending on version of the mounting plate the orientation may vary, see images below.



Note that the rounded edge is on the top for horizontal mounting plates and on the bottom for the plate parallel to the Tiger 800 frame.

Open the four prepared holes on the correct side with a 5.8mm or 6.0mm drill.



3. Install the toolbox onto the mounting plate

Take the holder off the rack. This makes it easier to install the toolbox.

Use *item numbers 8* and *9* to mount the toolbox to the plate. See below for example images.



Tighten the nuts but be cautious. It's plastic and can break if a lot of force is applied. Hand tight is in most cases sufficient. The teeth on the nuts prevent it from coming loose.



4. Place the adapters on the bottom two (M6) bolts.

Placing the adapters will make the holder plate parallel with the case rack.



It is also possible to not utilize the adapters. In that case use the shorter M6 bolts (if provided).



5. Place the bracket onto the rack and secure it with the rings and nuts.

Place the rings, *items 2 and 5*, and fasten them with the stopping nuts, *items 3 and 6*. (see image below)

Tighten the stopping nuts hand-tight.



Now have fun and adventures! Be sure to fill the toolbox with useful tools and or just some nice snacks 😊!!

Soft luggage mounting

1. Deinstall the original mounting hardware

Remove the original mounting mechanism and bobbins of the metal panniers.



Be careful with the springs inside the upper grey locking mechanism. These may come loose. Use a bag to store these loose items in case you want to re-install the mechanism.



2. Drill holes in the toolbox.

Test the fit of the mounting plate by temporarily mounting the bracket with the screws seen on the right.



Check the orientation that is preferred for your mounting plate and toolbox. Depending on version of the mounting plate the orientation may vary.



Note that the rounded edge is on the top for horizontal mounting plates and on the bottom for the plate parallel to the Tiger 800 frame.

Open the four prepared holes on the correct side with a 5.8mm or 6.0mm drill.



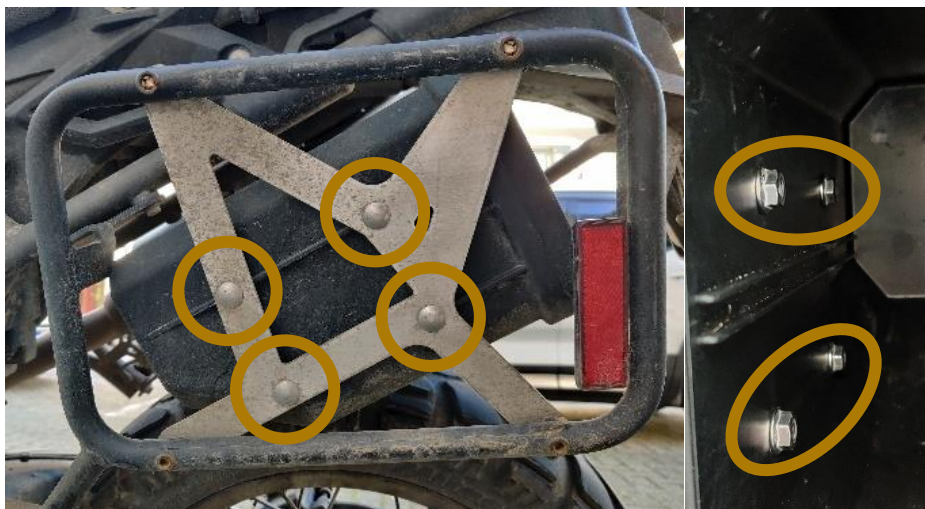
3. Install the toolbox onto the mounting plate

Take the holder off the rack. This makes it easier to install the toolbox.

Use *item numbers 8* and *9* to mount the toolbox to the plate. See below for example images.



Tighten the nuts but be cautious. It's plastic and can break if a lot of force is applied. Hand tight is in most cases sufficient. The teeth on the nuts prevent it from coming loose.



4. Install the bracket

Use the brass M6 inserts on the top holes. Put the screw already through the top holes and screw them on until there is some slight resistance. Insert them into the holes of the rack and continue tightening them. Be sure to put the bottom screws in the holes before tightening the top screws too firmly.

Now have fun and adventures! Be sure to fill the toolbox with useful tools and or just some nice snacks 😊!!